

DECKARD'S DREAM

STEREO OUTPUT MODIFICATION

This modification provides a stereo output from the REV1 DIY Deckard's Dream synthesizer by using the summed outputs from both voices before they are mixed to a single audio signal on the motherboard. It DOES NOT provide a stereo signal to the headphone jack, and the volume knob on the front panel DOES NOT function for the stereo outputs.

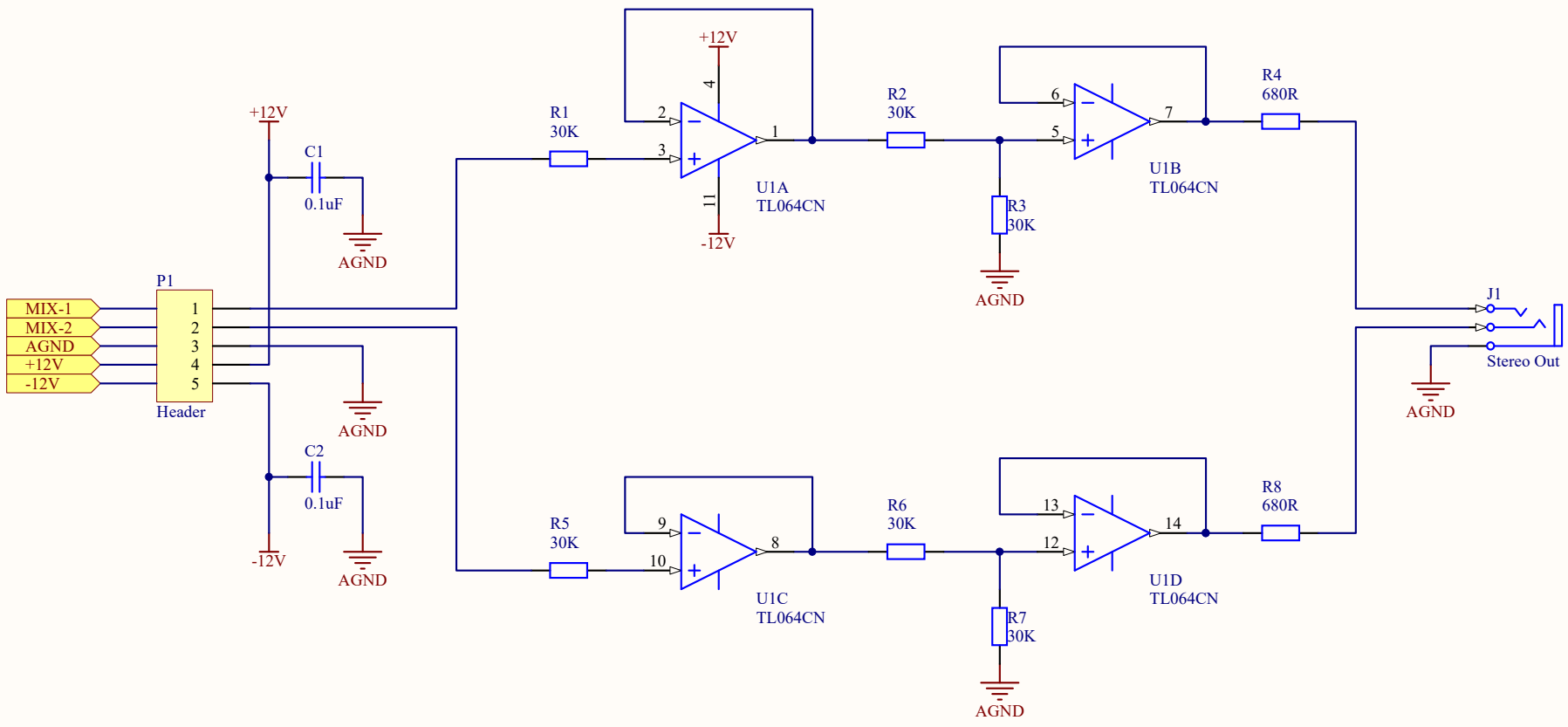
The stereo output can be used to provide more flexibility when recording. It separates the individual voices that are normally mixed within the synthesizer. As a result, some patches that require precise mixing of these voices will sound different when separated (but of course they can be properly mixed again later). It provides a wide stereo image when used with similar, but slightly different voices.

There is no fabricated circuit board for this. You must design your own, either by using PCB design software or using a simple prototype board, which will work fine as it has a minimal number of components.

PLEASE NOTE: This modification is provided by and for the Deckard's Dream DIY community only and IS NOT APPROVED, ENDORSED NOR SUPPORTED BY BLACK CORPORATION. Please DO NOT contact the factory for support with this. The user making the modification assumes any and all responsibility. The developers of this modification ARE NOT RESPONSIBLE in any way to any damage, loss, malfunction, diminished value or any other detrimental effects caused by this modification to your Deckard's Dream synthesizer or any outboard gear connected to it. If you don't agree with the foregoing, please do not proceed with making these modifications to your synthesizer.

For more information about this modification, please join the Deckard's Dream Build Group in Facebook.

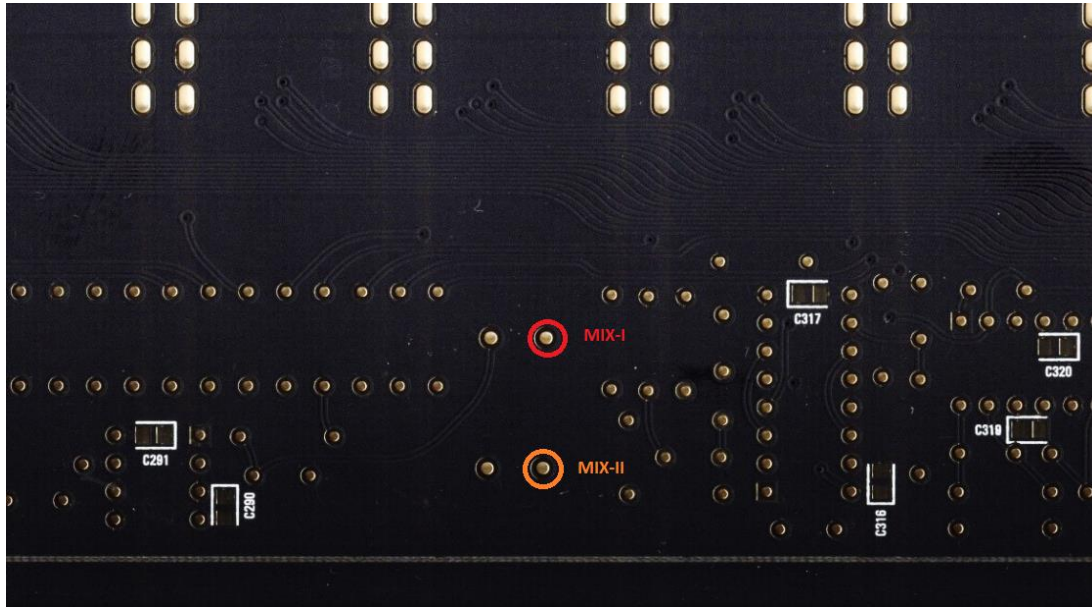
Developed by Ando Pilve and Paul Schilling
August 6, 2018



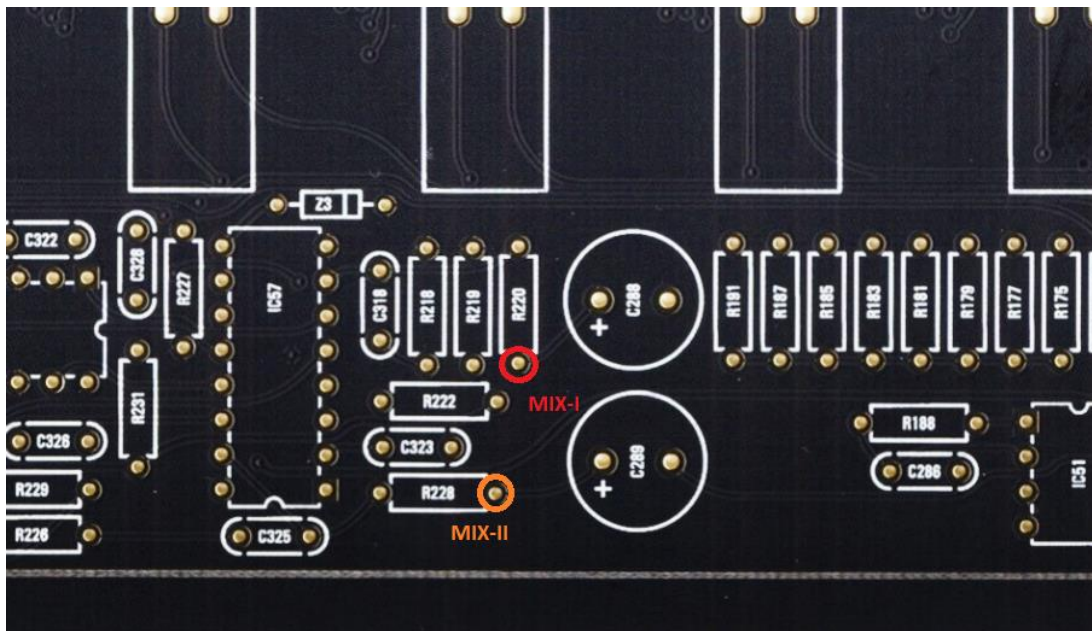
| | | |
|---------------------|----------------------------|--------------|
| Title | | |
| DDRMS STEREO OUTPUT | | |
| Size | Number | Revision |
| A | | 1.0 |
| Date: | 5/15/2018 | Sheet of |
| File: | C:\Users\...\Sheet1.SchDoc | Drawn By: AP |

Audio connections on the motherboard:

The MIX-I and MIX-II inputs to the stereo board can be connected on the main board at the following points:

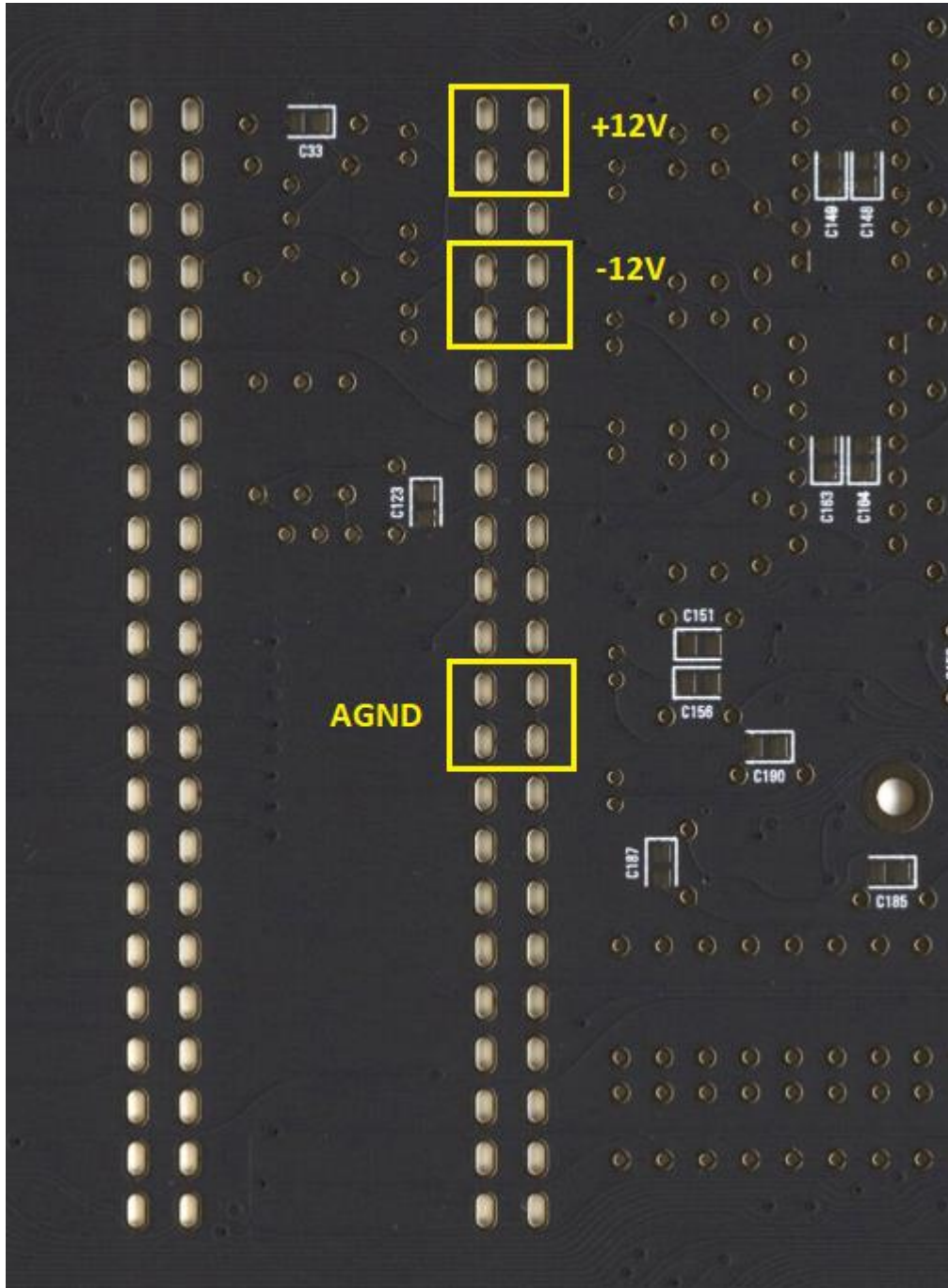


Or they can be connected on the component side (not recommended):



Power connection:

The +12V, -12V and AGND connections can be done at the PSU header pins:



How to bring the stereo out of the case:

To bring Stereo out of the case, either use two shielded 1-conductor pigtail cables with RCA connectors at the end, or a shielded 2-conductor cable with a single ¼" stereo connector at the end. You can bring the cable out from the side of the case thru a hole next to the panel without drilling a hole into the case.

A second option is by modifying the output board to use the modulation input jack as a stereo out, which requires rerouting the modulation input to the currently unused "Ring" pin on the output jack. The external input can still be used with a Y-cable, and is normally grounded when using a ¼" plug on the mono output.

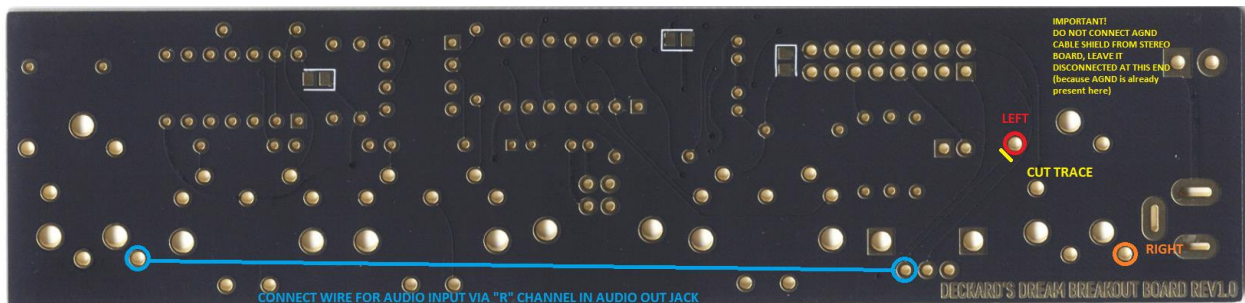
This will provide you the following:

EXTERNAL INPUT jack:

- Tip: Left channel output
- Ring: Right channel output

AUDIO OUT jack:

- Tip: Mono output (unchanged)
- Ring: Modulation input



Circuit Board Mounting:

The circuit board can be mounted next to the power supply by using one of the PSU mounting screws. Alternatively, it can be affixed with Velcro or double-stick tape to inside the case or to a location where it does not interfere with the existing circuitry.

Suggested mounting location is shown below for the stereo board.

