

# Installing the 909 Cartridge Reader into RE-909

Installing the cartridge reader is super easy.

Let's begin with the package: Please check that all parts are there:

The cartridge reader housing with PCB, the HIF2C-30dt adapter, the 30pin ribbon cable and the screws with washers.

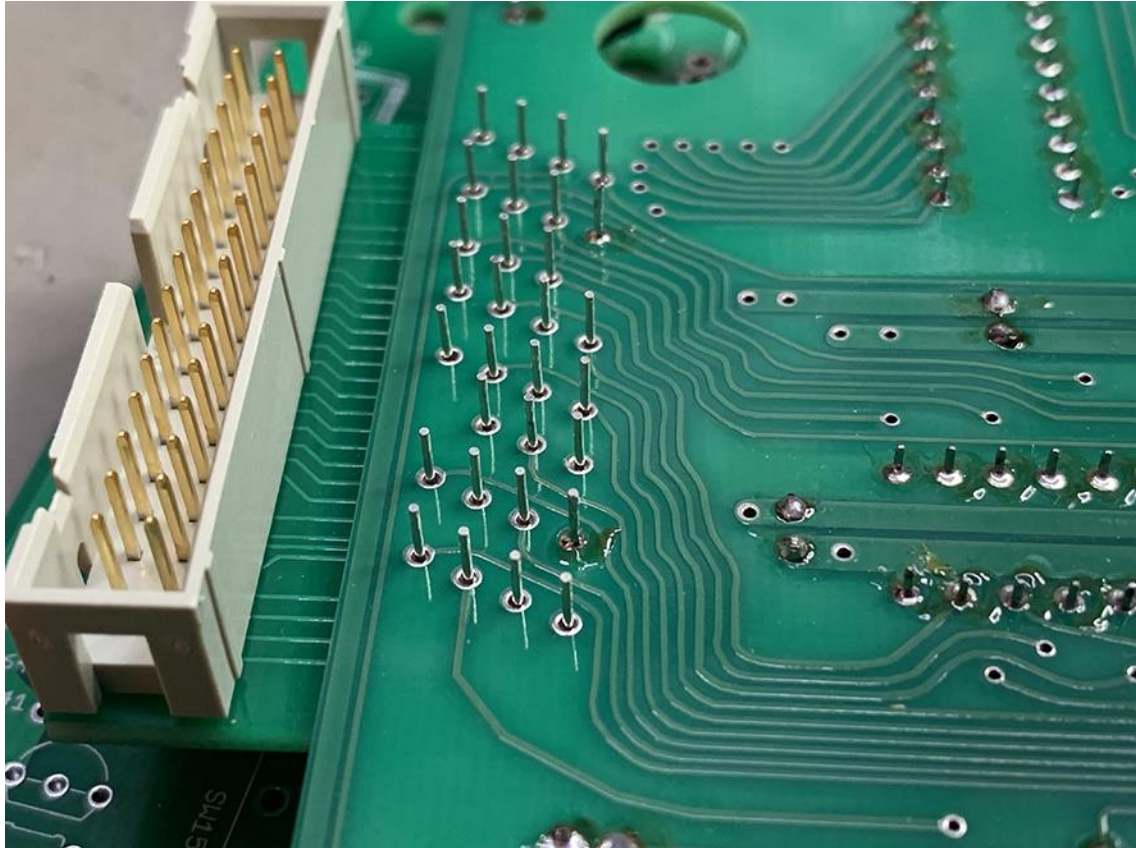


First, remove the protective foam from the HIF2C adapter PCB and check for bend or broken pins.

Remove the voiceboard of your RE-909 so that you can reach the switchboard and have enough space to work.

Look at the left side of your switchboard for the HIF2C-30dt connector. This is where your adapter has to be placed. The adapter can be installed very carefully **without** removing your switchboard. If you want to be sure, you can also remove the switchboard first.

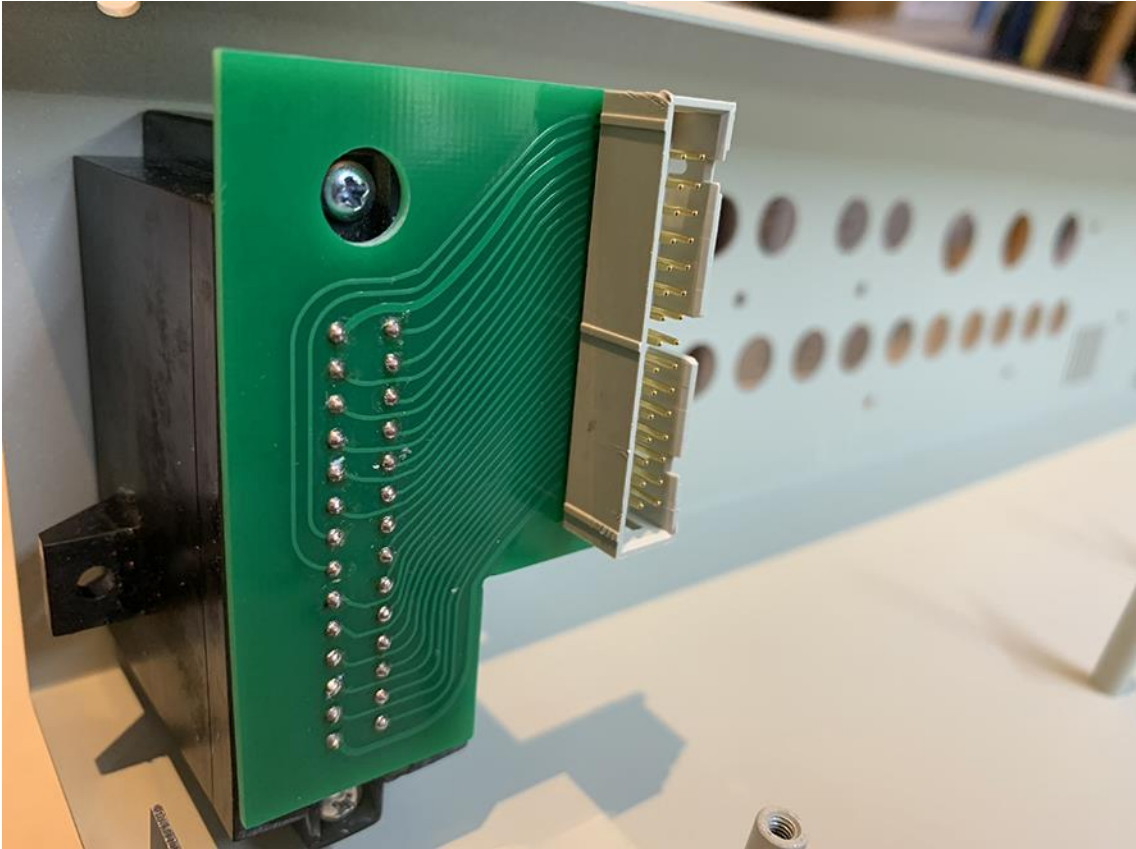
Carefully insert the pins of the adapter board from below through the openings and solder only two to three pins at first, so that the adapter holds for the time being.



Check if the adapter fits well and then solder all remaining pins. When all pins are neatly soldered, cut the pins as short as possible with the string cutter. This was already the biggest part of the work, the rest is just a piece of cake.

You can now put the switchboard and voiceboard back into the case.

Now place the cartridge reader in the back of the case and when everything is in place, screw the cases together with the self-tapping screws. Do not forget to put the washer underneath and do not overtighten the screws!!



That was it already! Now just carefully insert the ribbon cable and your RE-909 is ready to store on the original Roland MC memory card.

**TIP: When you plug in the ribbon cable at the switchboard side, hold one or two fingers against it from below, so that the HIF2C adapter does not break or the solder pins are torn off.**

Congrats! Now you have a very complete 909 replica 😊

***Cheers and thank you very much!***